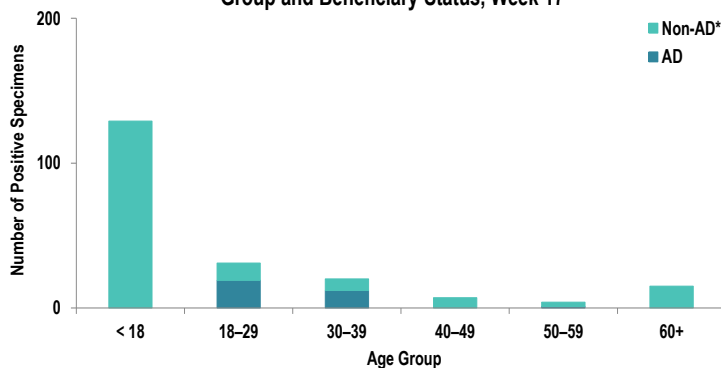


### SUMMARY

Influenza activity in the Army population is low and continues to decrease. Overall, respiratory syncytial virus (RSV) activity is low. One influenza-associated hospitalization was reported during Week 17; the case was a vaccinated, non-AD individual. The season total thus far is 171 hospitalizations; an average of 195 hospitalizations occurred in the same time period during the 2018-2023 seasons. Nationwide, influenza activity continues to decrease, with 3.1% of specimens tested by clinical laboratories being positive for influenza A or B, according to the Centers for Disease Control and Prevention (CDC).

### DEMOGRAPHICS

Positive Respiratory Specimen Results from Army MTFs by Age Group and Beneficiary Status, Week 17



**AD:** Thirty-two positive respiratory specimens were collected from active duty (AD) service members (SMs) during Week 17; 59.4% (n=19) of the positive specimens were collected from SMs 18 – 29 years of age.

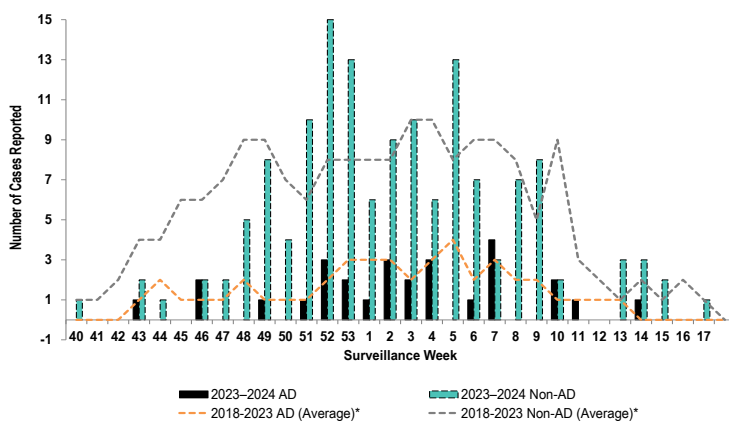
**Non-AD:** One hundred and seventy-four positive respiratory specimens were collected from non-AD individuals during Week 17; 74.1% (n=129) of the positive specimens were collected from individuals under 18 years of age.

\*Non-AD=All individuals that are not active duty service members.

The age and beneficiary status of some cases were not available. Therefore, all calculations involving these variables were conducted using only available data. Differences in total results, and age- and beneficiary status-specific results may be noted throughout the report.

### INFLUENZA-ASSOCIATED HOSPITALIZATIONS

Army Influenza-Associated Hospitalizations Reported in DRSi by Onset Week



One influenza-associated hospitalization with an onset date in Week 17 was reported to the Disease Reporting System internet (DRSi). The season total thus far is 171 hospitalizations. The Week 17 average during the 2018 – 2023 seasons was less than one hospitalization (with an average of 195 hospitalizations reported from the start of the season through Week 17).

The DRSi does not capture cases older than 65 years old for influenza-associated hospitalizations.

\*Data from the 2020-2021 and 2021-2022 influenza seasons are not included in comparison calculations due to the unusually low incidence of influenza.

Data are preliminary and subject to change.

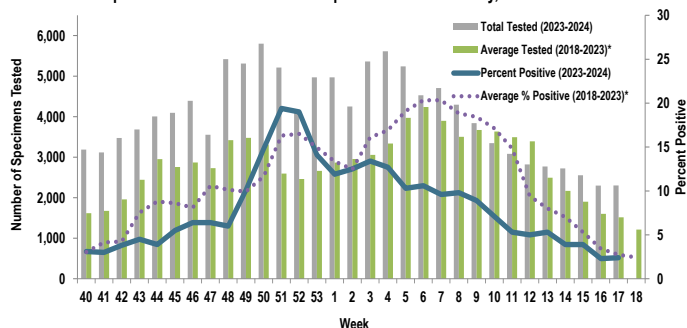
Disclaimer: The mention of any non-federal entity and/or its products is for informational purposes only, and not to be construed or interpreted, in any manner, as federal endorsement of that non-federal entity or its products.

Questions?  
Email [DCPH-A\\_DEP](mailto:DCPH-A_DEP)

## INFLUENZA A ACTIVITY - ARMY

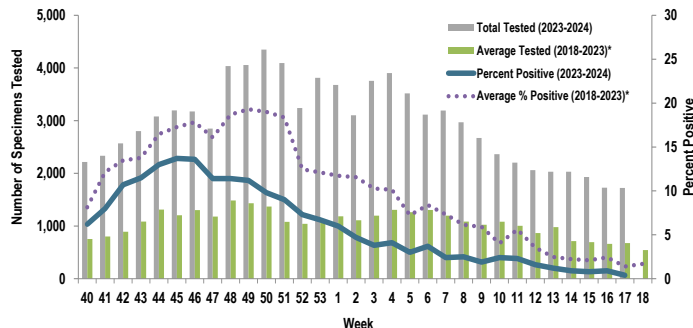
## RSV ACTIVITY - ARMY

Proportion of Positive Influenza A Specimens for U.S. Army, 2023-2024



Of the 2,302 specimens tested for influenza A during Week 17, 2.4% (n=56) were positive. Influenza A activity is low and continues to decrease.

Proportion of Positive RSV Specimens for U.S. Army, 2023-2024



Of the 1,722 specimens tested for RSV during Week 17, 0.4% (n=7) were positive. RSV activity is low and continues to decrease.

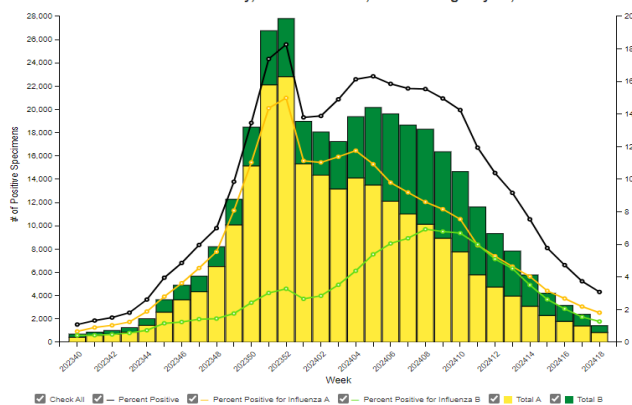
\*Data from the 2020–2021 and 2021–2022 influenza seasons are not included in comparison calculations due to the unusually low incidence of influenza.

	Week 14	Week 15	Week 16	Week 17	Season Total	
Army MTF Laboratory Results, 2023-24	Adenovirus	15	21	17	12	416
	Enterovirus	59	49	66	51	1,436
	Influenza A	105	100	54	56	11,392
	Influenza B	77	64	47	41	5,029
	Parainfluenza	27	33	28	39	533
	RSV	19	15	15	7	6,025
	Negative	2,494	2,336	2,143	2,157	102,153
	<b>Total</b>	<b>2,796</b>	<b>2,618</b>	<b>2,370</b>	<b>2,363</b>	<b>126,984</b>

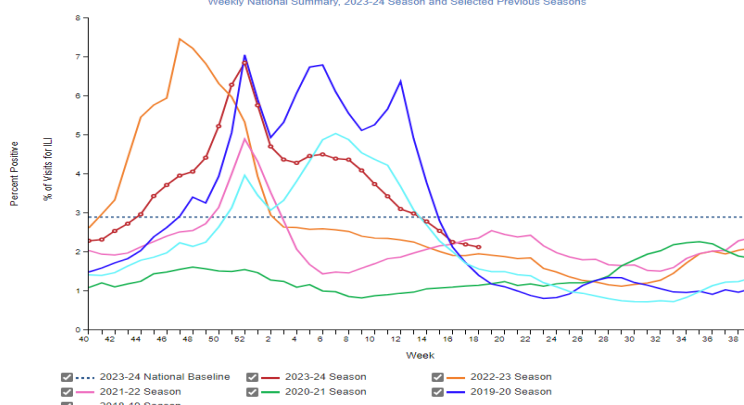
Of the 2,363 specimens tested during Week 17, 8.7% (n=206) were positive for any type of respiratory illness. Influenza A accounted for 27.2% (n=56), enterovirus accounted for 24.8% (n=51) of the positive results, influenza B accounted for 19.9% (n=41), parainfluenza accounted for 18.8% (n=39), adenovirus accounted for 5.8% (n=12), and RSV accounted for 3.4% (n=7). Additionally, the reported number of specimens tested decreased 0.3% from Week 16 to Week 17. Significantly more tests for influenza have been conducted this season compared to past seasons; 125,051 specimens have been tested for influenza A so far this season compared to the average of 88,608 specimens during the same time period in 2018-2023\*.

## INFLUENZA-LIKE ILLNESS (ILI) ACTIVITY - UNITED STATES

Influenza Positive Tests Reported to CDC by Clinical Laboratories, National Summary, 2023-24 Season, week ending May 04, 2024



Percentage of Outpatient Visits for Respiratory Illness Reported by The U.S. Outpatient Influenza-like Illness Surveillance Network (ILINet), Weekly National Summary, 2023-24 Season and Selected Previous Seasons

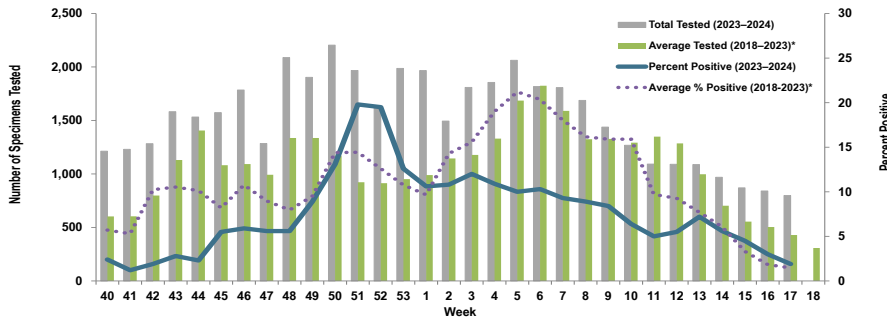


Nationwide in Week 17 (CDC's Week 18), incident ILI activity was 2.1%; this is below the national baseline of 2.9%. Additionally, a total of 46,245 specimens were tested for influenza by select clinical laboratories and submitted to the CDC; 1,426 (3.1%) were positive. Influenza A accounted for 58.8% (n=839) of the total positive specimens.

**Locations providing Week 16 laboratory data as of 9 May 2024:** Camp Zama, Carlisle Barracks, Ft. Belvoir, Ft. Bliss, Ft. Campbell, Ft. Cavazos, Ft. Carson, Ft. Drum, Ft. Eisenhower, Ft. Eustis, Ft. Gregg-Adams, Ft. Huachuca, Ft. Irwin, Ft. Jackson, Ft. Johnson, Ft. Knox, Ft. Leavenworth, Ft. Leonard Wood, Ft. Lewis, Ft. Liberty, Ft. Meade, Ft. Moore, Ft. Novosel, Ft. Riley, Ft. Sam Houston, Ft. Sill, Ft. Stewart, Ft. Wainwright, Korea, Landstuhl Regional Medical Center, Redstone Arsenal, Tripler Army Medical Center, the U.S. Military Academy at West Point, and Walter Reed National Military Medical Center.

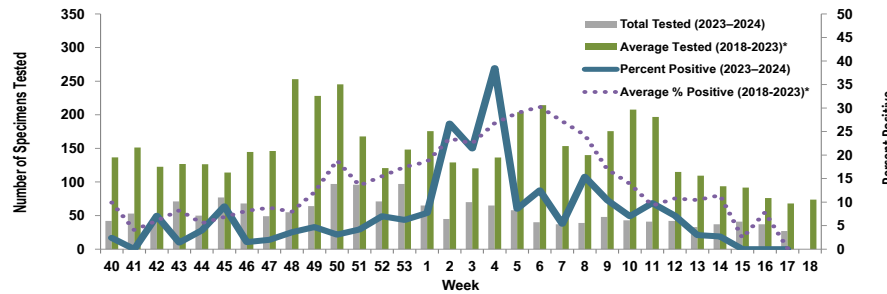
Proportion of Influenza A Positive Specimens by Week and Medical Readiness Command, 2023–2024 as Compared to 2018–2023\*

Medical Readiness Command - East



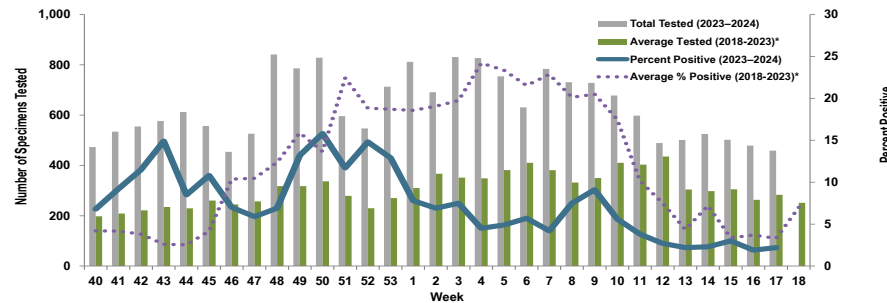
Week 17			
Age Group	AD	Non-AD	Season Total
< 18	0	4	1,325
18–29	1	2	944
30–39	3	2	631
40–49	0	1	405
50–59	0	1	310
60+	0	1	359
<b>Total</b>	<b>4</b>	<b>11</b>	<b>3,974</b>

Medical Readiness Command - Europe (Landstuhl Regional Medical Center)



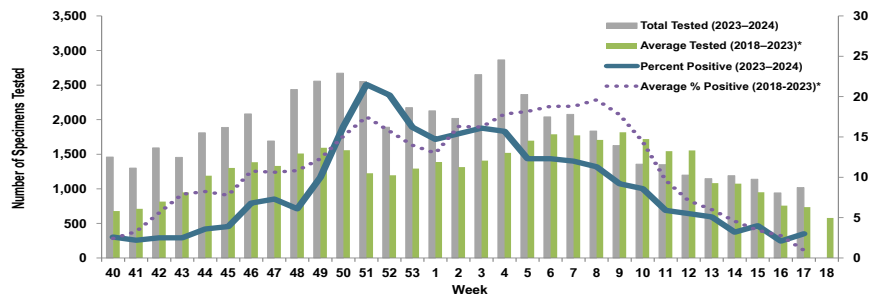
Week 17			
Age Group	AD	Non-AD	Season Total
< 18	0	0	47
18–29	0	0	24
30–39	0	0	25
40–49	0	0	17
50–59	0	0	11
60+	0	0	7
<b>Total</b>	<b>0</b>	<b>0</b>	<b>131</b>

Medical Readiness Command - Pacific



Week 17			
Age Group	AD	Non-AD	Season Total
< 18	0	4	396
18–29	1	0	537
30–39	2	1	277
40–49	0	0	109
50–59	0	0	67
60+	0	2	123
<b>Total</b>	<b>3</b>	<b>7</b>	<b>1,509</b>

Medical Readiness Command - West



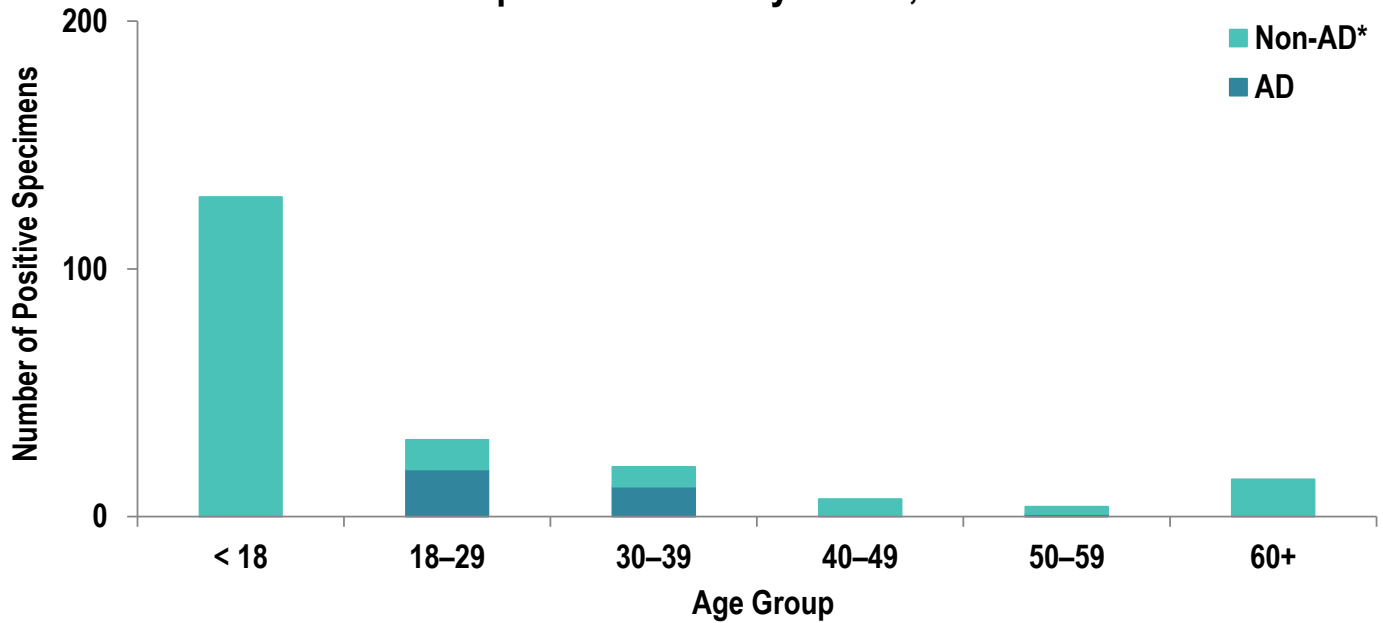
Week 17			
Age Group	AD	Non-AD	Season Total
< 18	0	11	2,021
18–29	7	5	1,490
30–39	3	0	911
40–49	0	3	520
50–59	0	2	384
60+	0	0	447
<b>Total</b>	<b>10</b>	<b>21</b>	<b>5,773</b>

\*2018–2019, 2019–2020, and 2022–2023 influenza seasons. Data from the 2020–2021 and 2021–2022 influenza seasons are not included in comparison calculations due to the unusually low incidence of influenza.

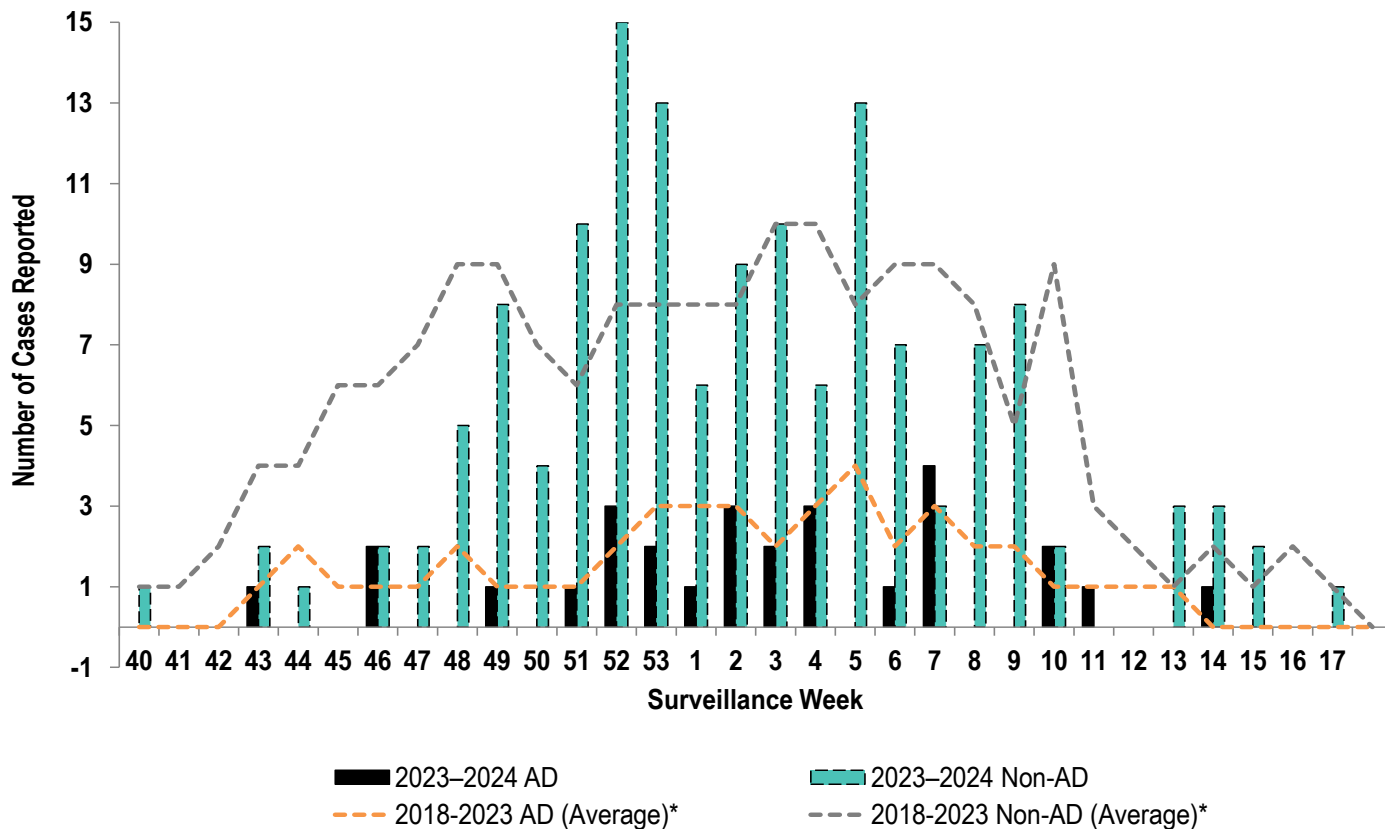
Number of Positive Influenza A Specimens by Region and Duty Status

Region	Week 14		Week 15		Week 16		Week 17	
	AD	Non-AD	AD	Non-AD	AD	Non-AD	AD	Non-AD
MRC-East	32	22	16	23	8	17	4	11
MRC-Europe	0	1	0	0	0	0	0	0
MRC-Pacific	4	8	3	12	5	4	3	7
MRC-West	14	24	12	34	8	12	10	21

### Positive Respiratory Specimen Results from Army MTFs by Age Group and Beneficiary Status, Week 17

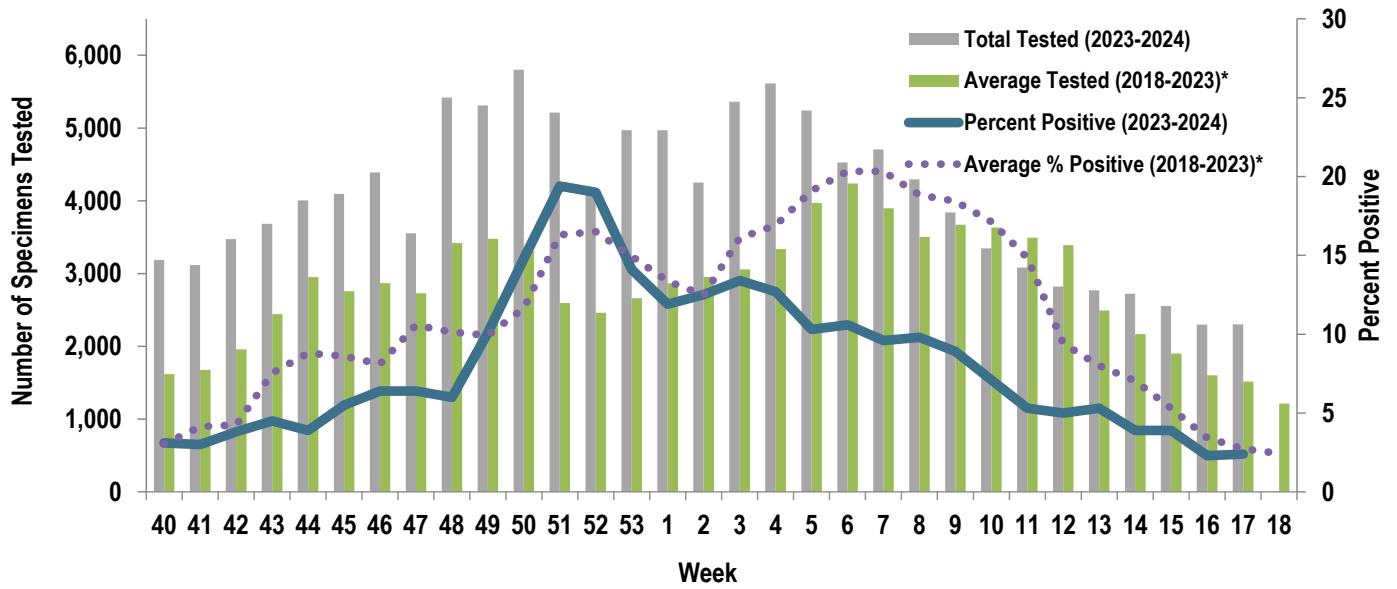


### Army Influenza-Associated Hospitalizations Reported in DRSi by Onset Week



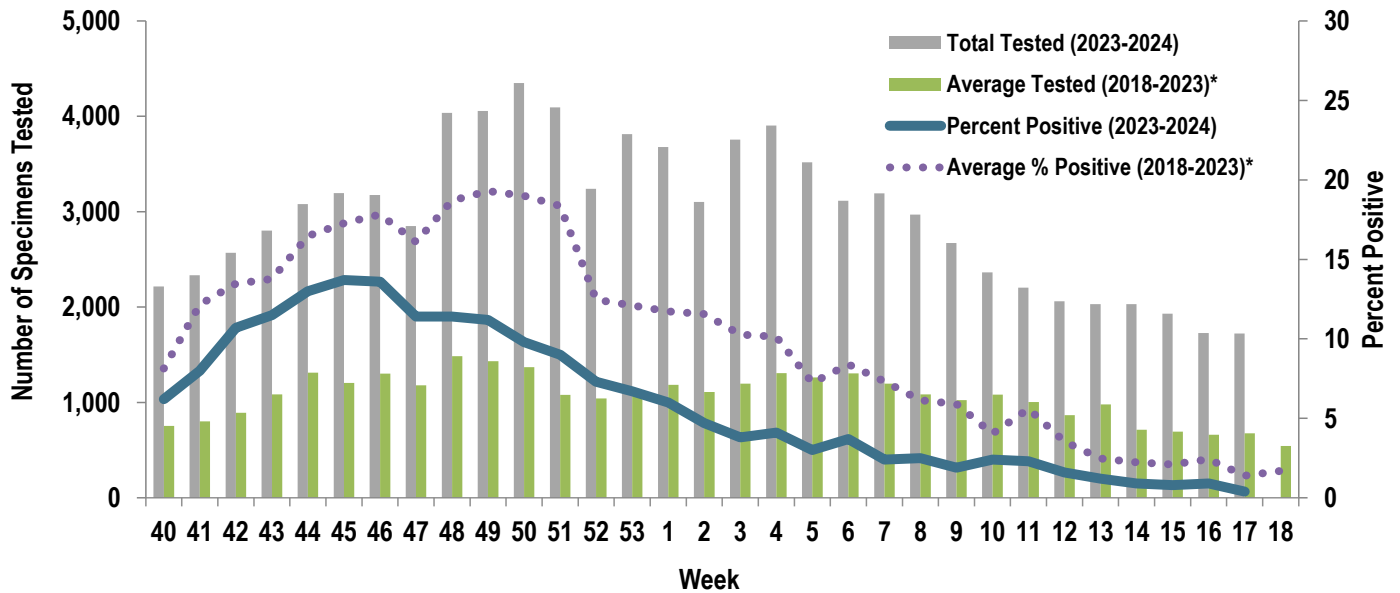
\*2018-2019, 2019-2020, and 2022-2023 influenza seasons. Data from the 2020-2021 and 2021-2022 influenza seasons are not included in comparison calculations due to the unusually low incidence of influenza.

Proportion of Positive Influenza A Specimens for U.S. Army, 2023-2024



\*2018–2019, 2019–2020, and 2022–2023 influenza seasons. Data from the 2020–2021 and 2021–2022 influenza seasons are not included in comparison calculations due to the unusually low incidence of influenza.

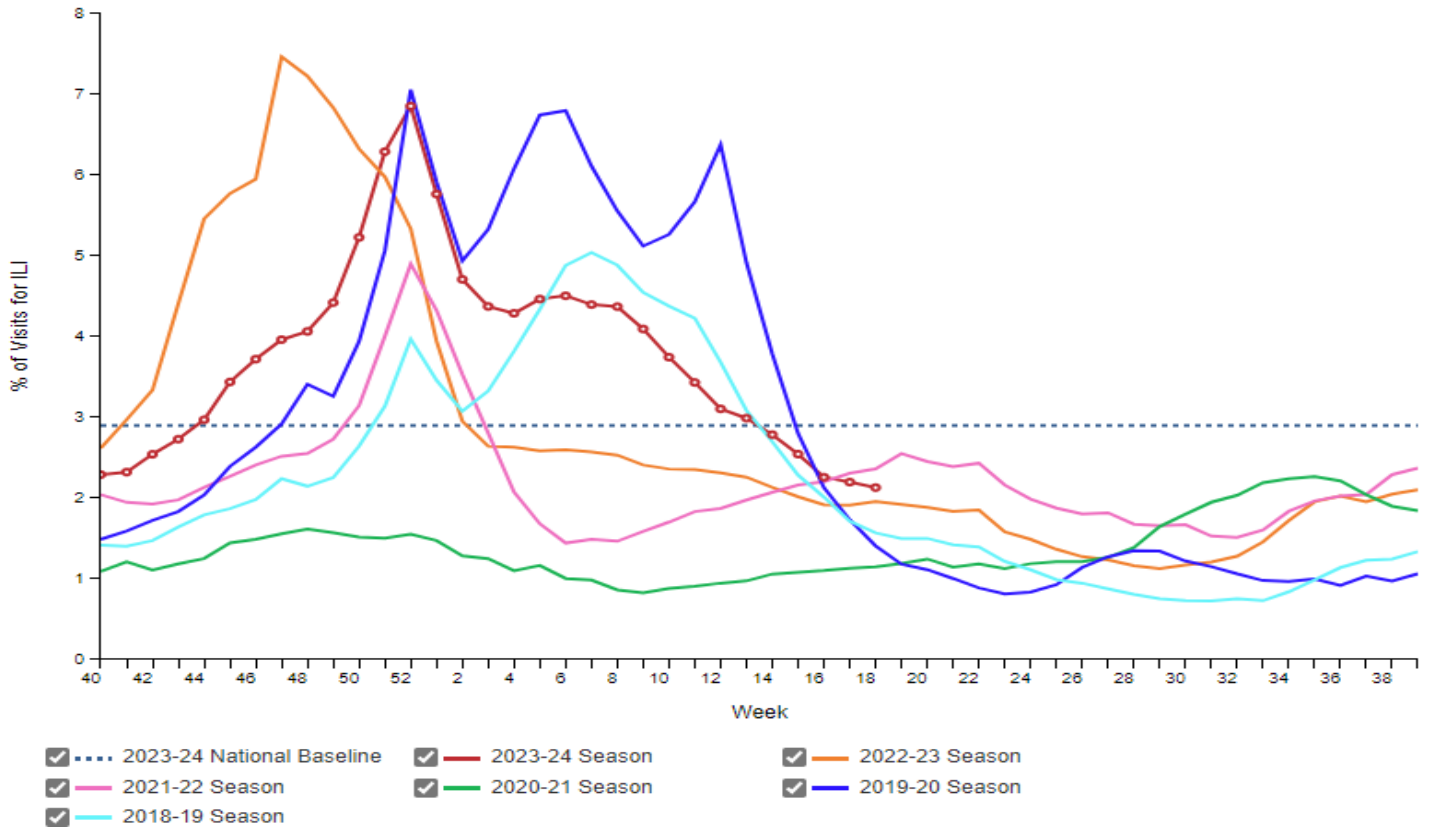
### Proportion of Positive RSV Specimens for U.S. Army, 2023-2024



\*2018–2019, 2019–2020, and 2022–2023 influenza seasons. Data from the 2020–2021 and 2021–2022 influenza seasons are not included in comparison calculations due to the unusually low incidence of influenza.



Percentage of Outpatient Visits for Respiratory Illness Reported by  
The U.S. Outpatient Influenza-like Illness Surveillance Network (ILINet),  
Weekly National Summary, 2023-24 Season and Selected Previous Seasons





### Influenza Positive Tests Reported to CDC by Clinical Laboratories, National Summary, 2023-24 Season, week ending May 04, 2024

